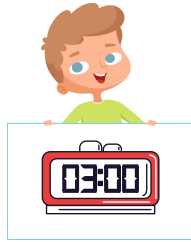


Name: _____

Date: _____



Matching Analog and Digital Clocks

Directions: Match



1



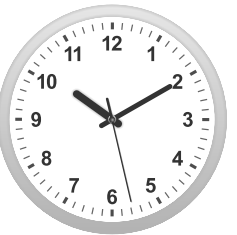
2



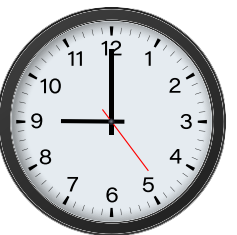
3



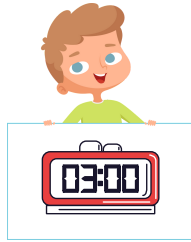
4



5



Answer key



Matching Analog and Digital Clocks

Directions: Match



Matching exercise showing five analog clocks (labeled 1 to 5) connected by lines to five digital clocks. The connections are as follows:

- Analog Clock 1 (3:00) connects to Digital Clock 9:00.
- Analog Clock 2 (9:05) connects to Digital Clock 9:05.
- Analog Clock 3 (7:00) connects to Digital Clock 7:00.
- Analog Clock 4 (10:10) connects to Digital Clock 10:10.
- Analog Clock 5 (5:00) connects to Digital Clock 5:00.

The digital clocks shown are: 9:00, 5:00, 10:10, 9:05, and 7:00.